



Health Science Inquiry Example Article

First Author^{1,2}, Second Author¹, and Third Author²

¹Department of Departmental Studies, L^AT_EX University

²Department of Article Templates, University of Example Documents

INTRODUCTION

Welcome to the Health Science Inquiry (HSI) article template! Herein you will find the majority of the information required to format your article per the HSI requirements. Should you find that this article insufficiently describes certain specifics, you are welcome to contact us at healthscienceinquiry@gmail.com and our layout team would be happy to address these questions! Now, onto the main components!

Given the brevity of the HSI article submissions, concision is key. Succinct paragraphs which convey essential and sequential concepts are strongly suggested in favour of verbosity. The use of section headers will convey the major messages and guide the reader. While this text is found in the section, you needn't restrict yourself to the conventional "Introduction-Methods-Results-Conclusion" format, common to most articles. In fact, it is recommended that the author enjoy creative liberties in defining article-appropriate section headers to best communicate the major messages of their work.

Subsections Organize your Concepts

This example of a sub-section demonstrates how a well-described header can succinctly summarize the content of the paragraph. The HSI template supports up to three levels of sub-sections (*i.e.*

subsubsection{ }) and deeper subsections are ill-advised; consider the use of additional article elements to organise your content, such as lists:

- First concept
- Second concept
- Third concept

This article template encourages the use of BibTeX in your L^AT_EX articles as exemplified in the sample.bib file provided in this template. The number of references is managed internally and you need only include the citation of the BibTeX entry key [1, 2].

Lorem ipsum dolor sit amet, consectetur adipiscing elit. Ut purus elit, vestibulum ut, placerat ac, adipiscing vitae, felis. Curabitur dictum gravida mauris. Nam arcu libero,

nonummy eget, consectetur id, vulputate a, magna. Donec vehicula augue eu neque. Pellentesque habitant morbi tristique senectus et netus et malesuada fames ac turpis egestas. Mauris ut leo. Cras viverra metus rhoncus sem. Nulla et lectus vestibulum urna fringilla ultrices. Phasellus eu tellus sit amet tortor gravida placerat. Integer sapien est, iaculis in, pretium quis, viverra ac, nunc. Praesent eget sem vel leo ultrices bibendum. Aenean faucibus. Morbi dolor nulla, malesuada eu, pulvinar at, mollis ac, nulla. Curabitur auctor semper nulla. Donec varius orci eget risus. Duis nibh mi, congue eu, accumsan eleifend, sagittis quis, diam. Duis eget orci sit amet orci dignissim rutrum.

Nam dui ligula, fringilla a, euismod sodales, sollicitudin vel, wisi. Morbi auctor lorem non justo. Nam lacus libero, pretium at, lobortis vitae, ultricies et, tellus. Donec aliquet, tortor sed accumsan bibendum, erat ligula aliquet magna, vitae ornare odio metus a mi. Morbi ac orci et nisl hendrerit mollis. Suspendisse ut massa. Cras nec ante. Pellentesque a nulla. Cum sociis natoque penatibus et magnis dis parturient montes, nascetur ridiculus mus. Aliquam tincidunt urna. Nulla ullamcorper vestibulum turpis. Pellentesque cursus luctus mauris.

Nulla malesuada porttitor diam. Donec felis erat, congue non, volutpat at, tincidunt tristique, libero. Vivamus viverra fermentum felis. Donec nonummy pellentesque ante. Phasellus adipiscing semper elit. Proin fermentum massa ac quam. Sed diam turpis, molestie vitae, placerat a, molestie nec, leo. Maecenas lacinia. Nam ipsum ligula, eleifend at, accumsan nec, suscipit a, ipsum. Morbi blandit ligula feugiat magna. Nunc eleifend consequat lorem. Sed lacinia nulla vitae enim. Pellentesque tincidunt purus vel magna. Integer non enim. Praesent euismod nunc eu purus. Donec bibendum quam in tellus. Nullam cursus pulvinar lectus. Donec et mi. Nam vulputate metus eu enim. Vestibulum pellentesque felis eu massa.

VISUAL ELEMENTS

The HSI article template supports the inclusion of various visual elements such as figures, tables, and algorithms. Please refer to Table 1 to see how you might format a table. Either the **t** or **b** options should be used to ensure that L^AT_EX places visual elements at either the top or bottom of a column. These visual elements should never appear in the middle of a given column. It is also good practise to avoid

Table 1: Example Table

Column 1 Header †	Column 2 Header (unit)	Column 3 Header (units)
This column is justified to the left	You can even include equations	\$14.07 \$13.69 \$5.120
More Text	πr^2	\$19.19
More Text	$P = NP$	\$18.81
More Text	$\sqrt{\frac{\lambda}{\phi^3}}$	\$17.36

† Example of how you might include a table footnote.

having visual elements next to one another. When one column contains a visual element at the top of a column, the adjacent column should only have another visual element at the bottom. A single column with visual elements at *both* the top and bottom should only be considered when two share highly complimentary information to orient the reader.

When preparing figures, vector-based files are recommended (*i.e.* SVG, PDF, EPS) as they provide tremendous flexibility in sizing your figures without a loss in resolution. Since HSI articles are distributed digitally, vector-based graphics are best ideally suited to all levels of zooming. It is acceptable to use JPEG images if the content is photographic as long as the resolutions and dots-per-inch (DPI) are appropriate (*e.g.* ≥ 300). We strongly advise against screenshot images unless capturing computer-based visual content.

When choosing colours, please consider the recommendations from [3]. Colours should only be used sparingly and when alternative black and white images fail to convey the figure message. For example, a flow chart does **not** require colours since the message is concisely captured in the black and white representation (Fig. 1).

Lorem ipsum dolor sit amet, consectetur adipiscing elit. Ut purus elit, vestibulum ut, placerat ac, adipiscing vitae, felis. Curabitur dictum gravida mauris. Nam arcu libero,

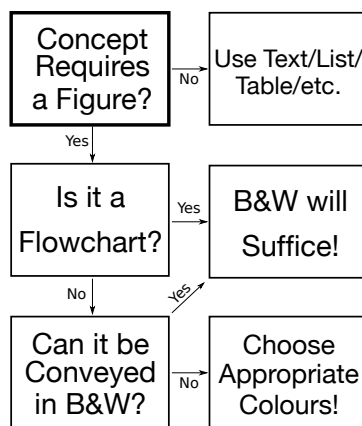


Figure 1: Example caption for a figure.

nonummy eget, consectetur id, vulputate a, magna. Donec vehicula augue eu neque. Pellentesque habitant morbi tristique senectus et netus et malesuada fames ac turpis egestas. Mauris ut leo. Cras viverra metus rhoncus sem. Nulla et lectus vestibulum urna fringilla ultrices. Phasellus eu tellus sit amet tortor gravida placerat. Integer sapien est, iaculis in, pretium quis, viverra ac, nunc. Praesent eget sem vel leo ultrices bibendum. Aenean faucibus. Morbi dolor nulla, malesuada eu, pulvinar at, mollis ac, nulla. Curabitur auctor semper nulla. Donec varius orci eget risus. Duis nibh mi, congue eu, accumsan eleifend, sagittis quis, diam. Duis eget orci sit amet orci dignissim rutrum.

Another Subsection

Nam dui ligula, fringilla a, euismod sodales, sollicitudin vel, wisi. Morbi auctor lorem non justo. Nam lacus libero, pretium at, lobortis vitae, ultrices et, tellus. Donec aliquet, tortor sed accumsan bibendum, erat ligula aliquet magna, vitae ornare odio metus a mi. Morbi ac orci et nisl hendrerit mollis. Suspendisse ut massa. Cras nec ante. Pellentesque a nulla. Cum sociis natoque penatibus et magnis dis parturient montes, nascetur ridiculus mus. Aliquam tincidunt urna. Nulla ullamcorper vestibulum turpis. Pellentesque cursus luctus mauris.

SUMMARY

Nulla malesuada porttitor diam. Donec felis erat, congue non, volutpat at, tincidunt tristique, libero. Vivamus viverra fermentum felis. Donec nonummy pellentesque ante. Phasellus adipiscing semper elit. Proin fermentum massa ac quam. Sed diam turpis, molestie vitae, placerat a, molestie nec, leo. Maecenas lacinia. Nam ipsum ligula, eleifend at, accumsan nec, suscipit a, ipsum. Morbi blandit ligula feugiat magna. Nunc eleifend consequat lorem. Sed lacinia nulla vitae enim. Pellentesque tincidunt purus vel magna. Integer non enim. Praesent euismod nunc eu purus. Donec bibendum quam in tellus. Nullam cursus pulvinar lectus. Donec et mi. Nam vulputate metus eu enim. Vestibulum pellentesque felis eu massa.

REFERENCES

- [1] Hortons T, Cupernicus S, Bachs S. A Review of Canadian Caffeine Consumption. *Journal of Caffeine*. 2018 Feb;9(1):125–138.
- [2] Trudeau J, Obama B. 'Its True, Doe!': Politics in a Post-Truth Era. *Journal of Post Truth*. 2017 Feb;9(1):654–666.
- [3] Rougier NP, Droettboom M, Bourne PE. Ten simple rules for better figures. *PLoS computational biology*. 2014;10(9):e1003833.



Example of an appropriate length bio. The paragraph should approximately match the height of the profile picture used. Ideally, the profile picture of all authors would have matching dimensions. The HSI article recommends using a high-resolution .PNG image with square dimensions or 2:3 aspect ratio (width:height; portrait). More bio text. More bio text. More bio text. More bio text. More bio text.



This is an example of an overly long bio; clearly Author Two is very accomplished! Following the recommendations above, someone with a long bio should use an image with portrait dimensions. The Biography-Box specifies only the **width** of both the image and text box so the two can grow vertically, but not horizontally. Irrespective of image and text size, the two will always remain vertically centered.

A separate paragraph can be added using the `\vspace{6px}` command. The BiographyBox is implemented using a L^AT_EX `table*` and so the `\\` should **never** be used.

Some concluding biography text simply to add length. Some concluding biography text simply to add length.



Author Three doesn't have much to say. That's okay! This is what a short bio would look like! Kudos for concision!